

**From:** [Jen Reimer](#)  
**To:** [Jen Reimer](#); [Jen Reimer](#)  
**Cc:** [Michele Bare](#)  
**Subject:** Trail names draft 2, please look over  
**Date:** Friday, October 31, 2025 12:48:39 PM  
**Attachments:** [Trail names, draft #2.jpg](#)

---

I have made some changes and updates as per suggestions. Please let me know your thoughts. Would like everyone on board so that we can hopefully pass at the November commission meeting to move on to council at their December meeting.

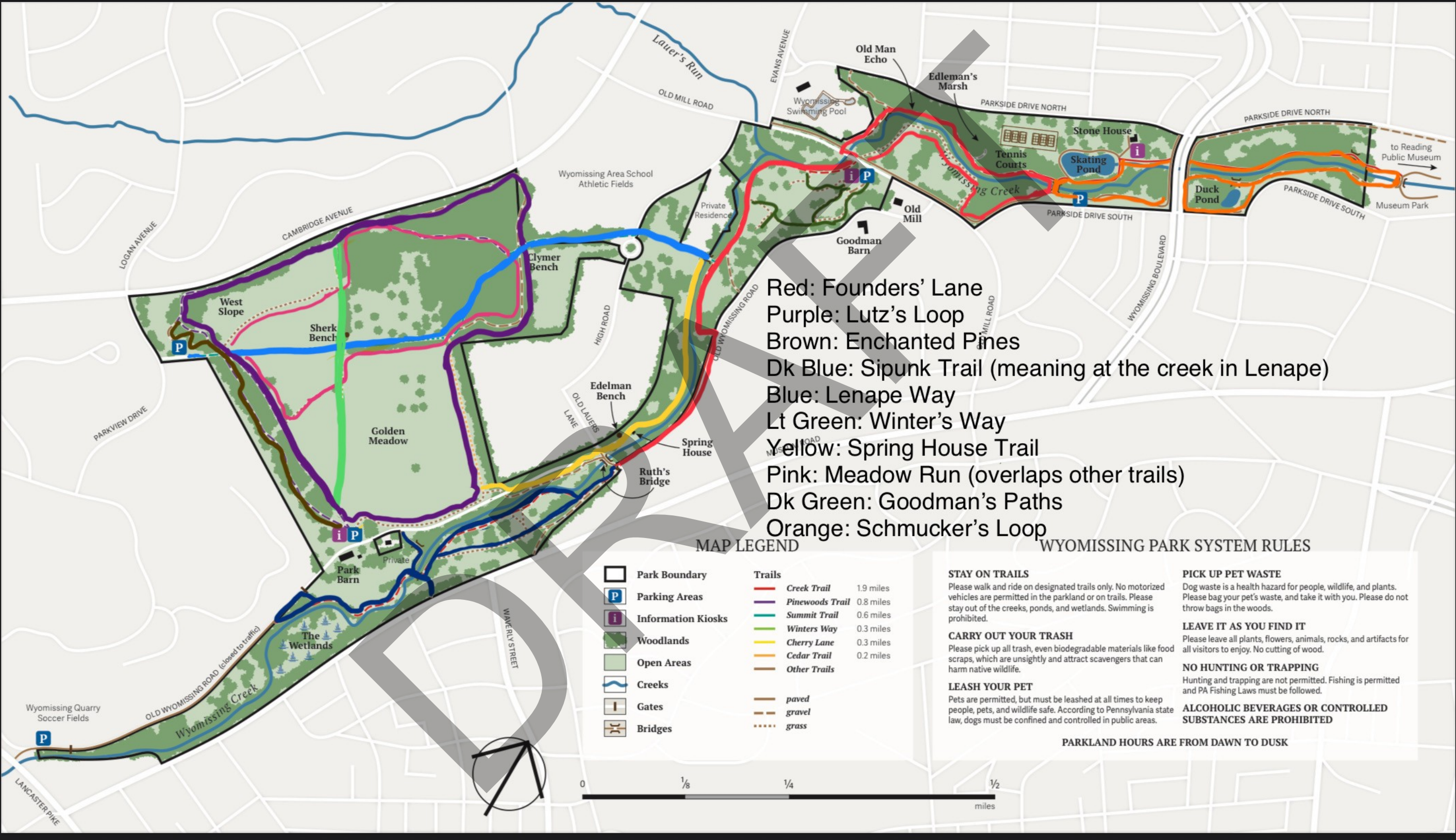
Please send along approvals or suggestions.

Thanks again for your time and input,

Jen



DRAFT



- Red: Founders' Lane
- Purple: Lutz's Loop
- Brown: Enchanted Pines
- Dk Blue: Sipunk Trail (meaning at the creek in Lenape)
- Blue: Lenape Way
- Lt Green: Winter's Way
- Yellow: Spring House Trail
- Pink: Meadow Run (overlaps other trails)
- Dk Green: Goodman's Paths
- Orange: Schmucker's Loop

MAP LEGEND

	Park Boundary
	Parking Areas
	Information Kiosks
	Woodlands
	Open Areas
	Creeks
	Gates
	Bridges
<b>Trails</b>	
	Creek Trail 1.9 miles
	Pinewoods Trail 0.8 miles
	Summit Trail 0.6 miles
	Winters Way 0.3 miles
	Cherry Lane 0.3 miles
	Cedar Trail 0.2 miles
	Other Trails
	paved
	gravel
	grass

WYOMISSING PARK SYSTEM RULES

STAY ON TRAILS

Please walk and ride on designated trails only. No motorized vehicles are permitted in the parkland or on trails. Please stay out of the creeks, ponds, and wetlands. Swimming is prohibited.

CARRY OUT YOUR TRASH

Please pick up all trash, even biodegradable materials like food scraps, which are unsightly and attract scavengers that can harm native wildlife.

LEASH YOUR PET

Pets are permitted, but must be leashed at all times to keep people, pets, and wildlife safe. According to Pennsylvania state law, dogs must be confined and controlled in public areas.

PICK UP PET WASTE

Dog waste is a health hazard for people, wildlife, and plants. Please bag your pet's waste, and take it with you. Please do not throw bags in the woods.

LEAVE IT AS YOU FIND IT

Please leave all plants, flowers, animals, rocks, and artifacts for all visitors to enjoy. No cutting of wood.

NO HUNTING OR TRAPPING

Hunting and trapping are not permitted. Fishing is permitted and PA Fishing Laws must be followed.

ALCOHOLIC BEVERAGES OR CONTROLLED SUBSTANCES ARE PROHIBITED

PARKLAND HOURS ARE FROM DAWN TO DUSK

**From:** [Daniel Macrina](#)  
**To:** [WILLIAM JENCKES](#); [Steve Brunner](#)  
**Cc:** [Michele Bare](#)  
**Subject:** Memorial/Sponsor Park Benches  
**Date:** Thursday, January 28, 2021 9:32:06 AM  
**Attachments:** [Wyomissing Borough Memorial Bench Option Proposal 2021 \(003\).pdf](#)  
[Frog Furnishings Catalog](#) [General Recreation Inc.html](#)

---

Good morning everyone,

As you may remember from our meeting two weeks ago, we discussed potentially allowing residents and business owners to adopt trail sections, or planting areas as well as pay for and donate park benches and picnic tables. I reached out to Steve Hemler, the Borough's playground equipment supplier from General Recreation and got a few prices on park benches and picnic tables. My thought is that we could make an online ordering form that is connected to the Borough's website. The donor could pay the full purchase price of the bench and its portion of shipping. The cost to ship 4 benches (just a number I had him quote) is \$455 total. If the Borough were to adopt this idea for park bench replacement, it would cut lots of labor cost/hours spent on bench maintenance every year.

In the first attachment you will find prices from 2 different bench manufacturers, PolySteel and Frog Furnishings. Personally I like the look of the products from Frog Furnishings.

In the second you will find Frog Furnishings catalog. Again, I personally like The Blair bench which is a steel bench and can be found on page 15. We would need to get a plaque made at a local shop for this bench.

The Heritage bench on page 6 is a mix of cast aluminum and resin slats. The slats can have and message engraved directly into the resin slats. You can see an example of the bench and engraving on page 41 of the catalog.

If we were to get this up and running, we could purchase one bench and engrave something like "In Memory of Thun and Janssen" or something like "Wyomissing Parks and Recreation" and display it in a prominent location for potential donors to view before purchasing.

I'm really hoping this is a project we can get off the ground as like I mentioned before, it's more cost effective for the Borough. Plus, I think they would look 100 times better than our current benches.

Sincerely,

Daniel A. Macrina, CPRP  
Director of Parks and Recreation  
Borough of Wyomissing  
22 Reading Boulevard  
Wyomissing, Pa 19610  
610-376-7481





# GENERAL | RECREATION, INC.

FROM CONCEPT THROUGH COMPLETION, WE DELIVER QUALITY

P.O. Box 440 · Newtown Square, PA 19073 · 1-800-726-4793

January 26, 2021

**Proposal by:**

Stephen F. Hemler CPSI  
717.761.2751

**Proposal for:** The Borough of Wyomissing  
Mr. Daniel A. Macrina, CPRP  
Parks and Recreation Director  
22 Reading Boulevard  
Wyomissing, PA 19610-2083

## Park Bench Donation Project

Premier Poly Steel			
1	Premier Polysteel 4' Contour Memorial w/Back SM Expanded	#974-1M3	\$780.00
1	Premier Polysteel 4' Contour Memorial w/Back SM Laser	#971-1M3	\$780.00
1	Premier Polysteel 6' Contour Memorial w/Back SM Expanded	#974-3M3	\$890.00
1	Premier Polysteel 6' Contour Memorial w/Back SM Laser	#971-3M3	\$910.00
Frog Furnishings			
1	Frog Furnishings 6' Heritage Bench-Engraved	#PB 6 HER-ENGR	\$750.00
1	Frog Furnishings 6' Blair Bench- <i>Plaque By Others</i>	#PB 6 BLAIR	\$1,235.00
1	Frog Furnishings 6' Rockford Bench- <i>Plaque By Others</i>	#PB 6 ROCK	\$900.00
1	Frog Furnishings 6' Wellington Bench- <i>Plaque By Others</i>	#PB 6 WELL	\$1,230.00
1	Frog Furnishings 6' A Frame Picnic Table- <i>Plaque By Others</i>	#PB APIC6	\$700.00
1	Frog Furnishings 6' ADA A Frame Picnic Table- <i>Plaque By Others</i>	#PB APIC6 ADA	\$845.00
1	Frog Furnishings 6' Hex Picnic Table - <i>Plaque By Others</i>	#PB 6HEX	\$700.00
1	Frog Furnishings 6' ADA Hex Picnic Table- <i>Plaque By Others</i>	#PB 6HEXADA	\$680.00

- ❖ Pricing does not include freight, unloading, storage or installation.
- ❖ Permits, if required, are the responsibility of the Owner.
- ❖ Proposal pricing as per Pennsylvania COSTARS-014-071 Recreational & Fitness Equipment Contract. Vendor #122659
- ❖ Terms: Net 30 days.
- ❖ Lead Time: Will Advise.
- ❖ Prices are quoted for 2021 and are firm for 60 days only and are subject to review thereafter.
- ❖ Prices are for materials only.
- ❖ Prices do not include Pennsylvania Sales Tax.
- ❖ Installation services of any scope are not included,
- ❖ Standard manufacturer's design, color, specification and construction apply.
- ❖ Materials listed above are nonreturnable.

To confirm order, please sign and return to our office.

Signature \_\_\_\_\_

Post Office Box 440, Newtown Square Pennsylvania 19073  
**Office:** 717-761-2751 · **Fax:** 717-761-2493